

Printing & Recording

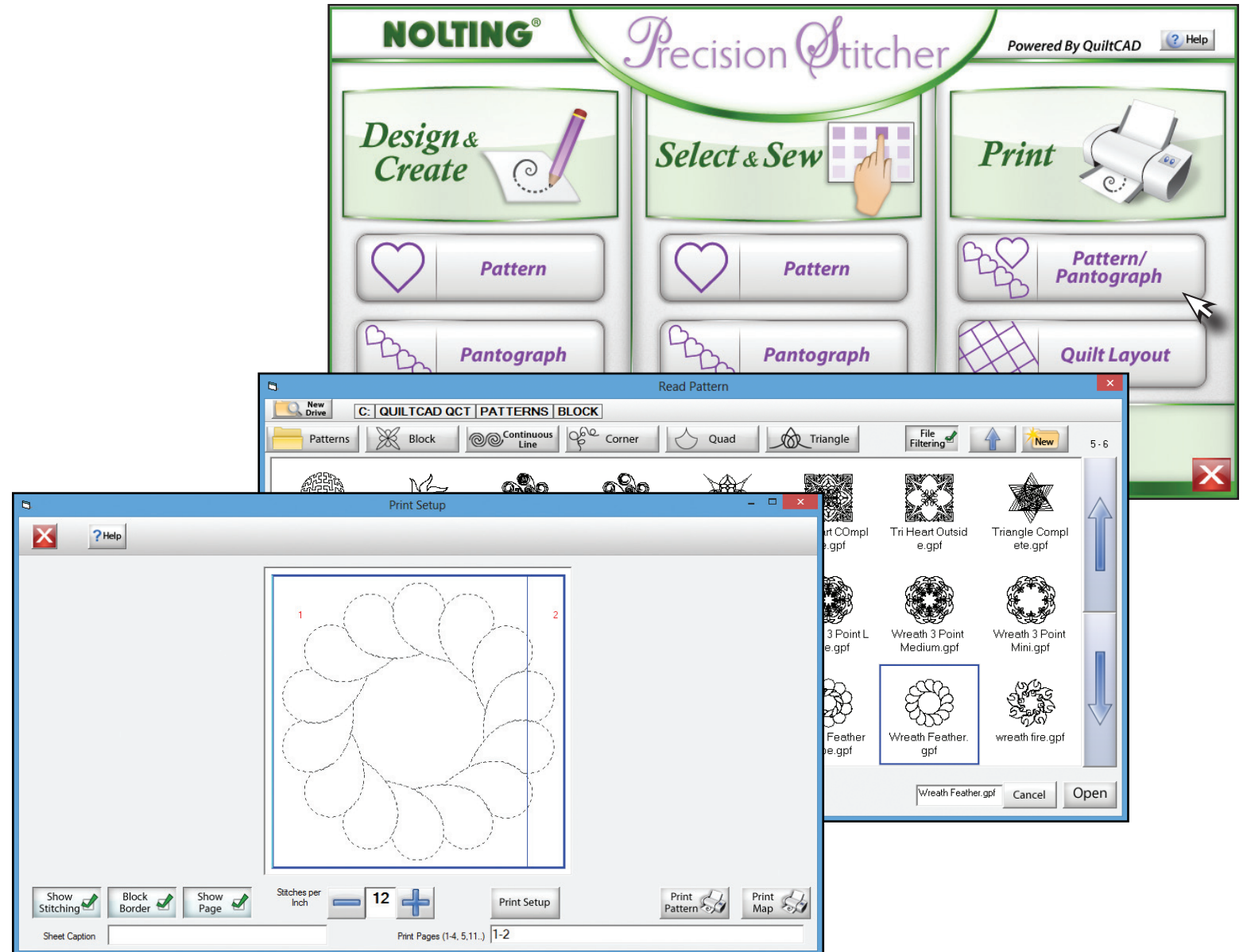
This guide will show you how to print a single pattern, or pantograph with many patterns. These can be used with freehand quilting or used to see how the pattern will reside on the quilt.

Print a Pattern

Steps to Print a pattern:

1. Select Print Pattern/Pantograph.
2. Select the pattern you wish to print.
3. Check your print settings.
4. Tap Print Pattern.

It's that easy!

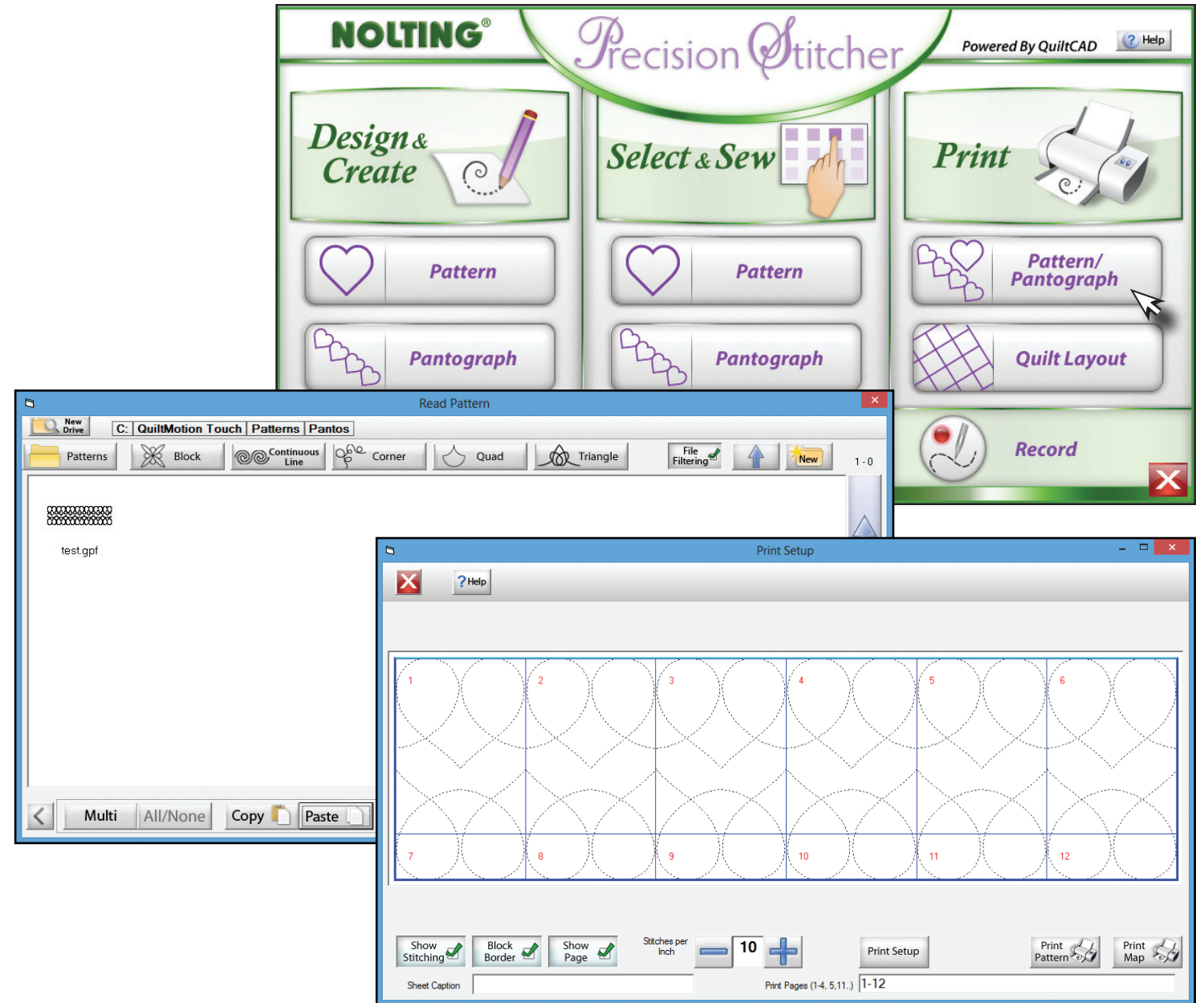


Print a Pantograph

Steps to Print a Pantograph:

1. Select Print Pattern/Pantograph.
2. Select the pantograph you wish to print.
3. Check your print settings.
4. Tap Print Pattern.

Printing a Pantograph is tricky, meaning you may need to cut the edge of the paper in order to realign the images exactly.



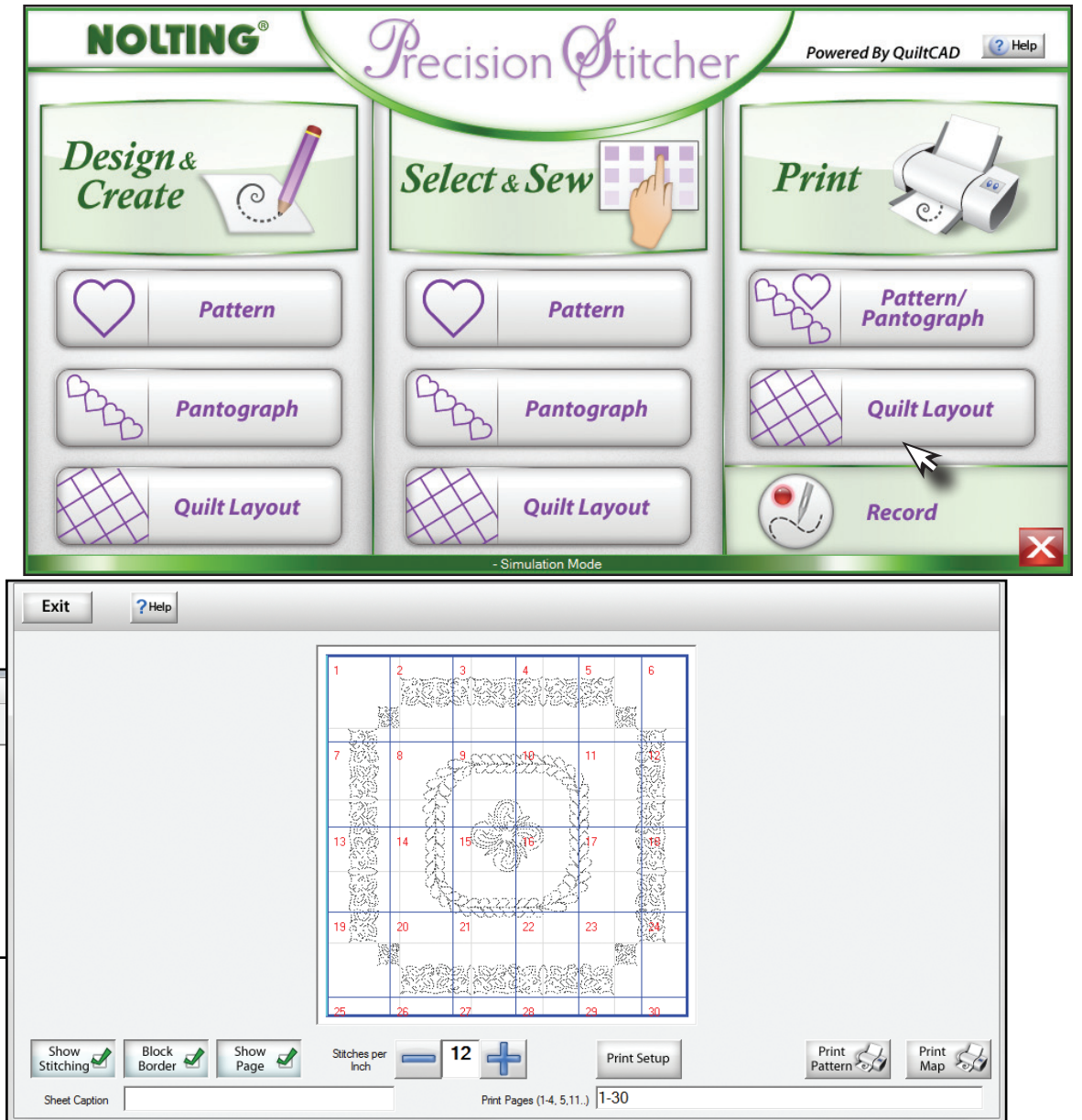
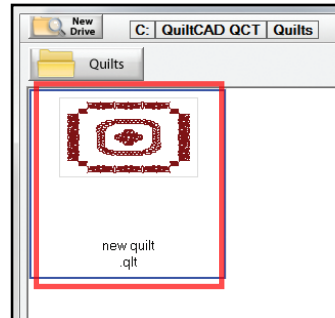
Print: Quilt

Printing a Quilt can be a very useful tool for your layout. In order to print one you will have to first create the quilt and save it as a QLI file.

This allows you to select the quilt in the printing section.

1. Tap on Quilt under the Print heading.
2. Select a previously saved Quilt.
3. Set the area you wish to print and tap Print.

You can choose to print a row, a single pattern, or the entire quilt from here.



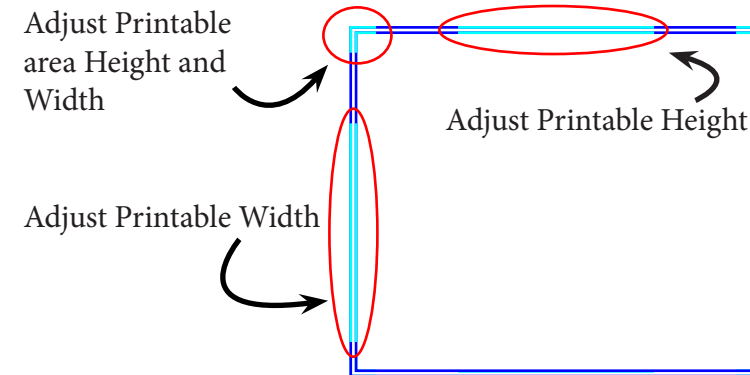
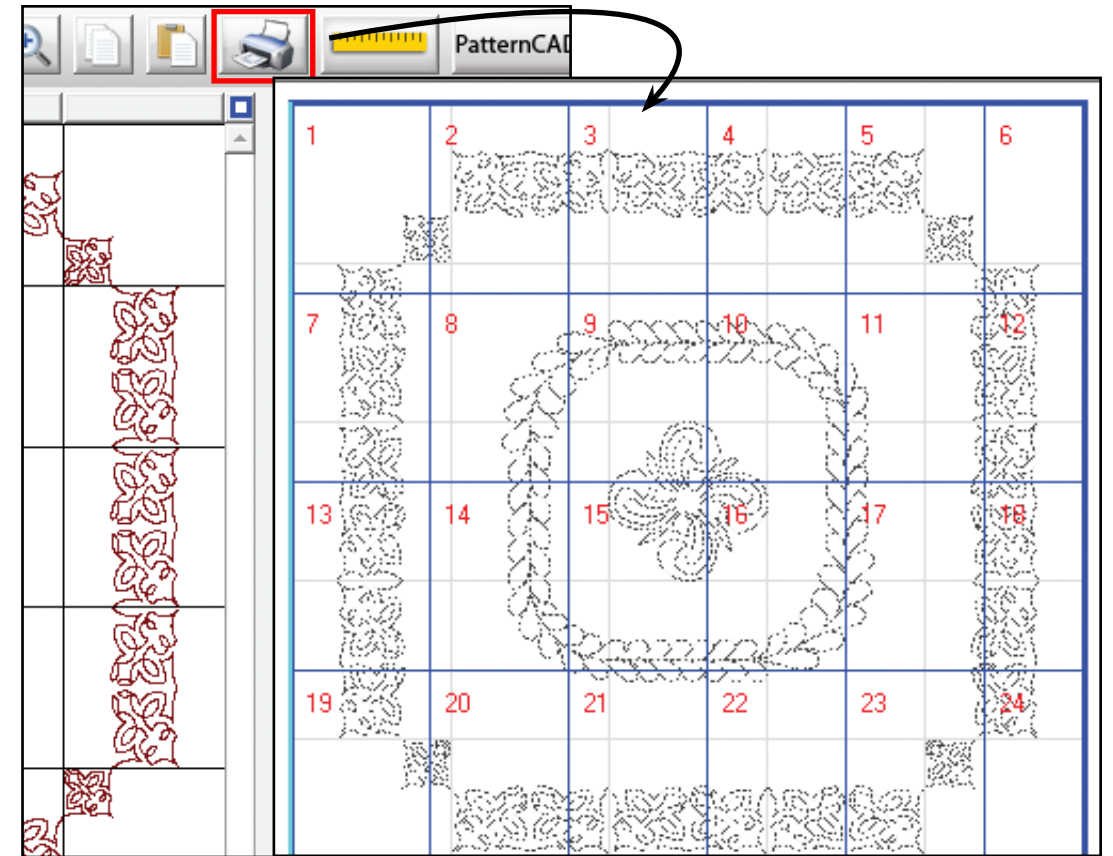
Print Selection Tools

QuiltCAD offers the ability to print out a quilt you have created. This can have many uses from seeing how the quilt will actually look to printing it out so it can be traced onto the quilt if you want to create it with free motion sewing. Currently, only paper sizes of 8.5 x 11 are supported.

To print your selection, simply tap the Printer icon in the menu bar. If you have no specific row, column, or block selected the print setup will open and display all printable patterns. You can selectively choose rows, columns, or blocks to print individually.

Here we created a new quilt using the default size and added a different pattern to each row. As we had no specific block selected you can see the entire quilt is being displayed. Within the print setup screen there are a few options you can change at the bottom of the screen, and there are some that you can only access with your mouse.

Using your mouse, put the cursor over the top left corner of the area to be printed. You should notice that the blue line changes to a light blue line. This means that the object can be selected and moved. This allows you to select an area to be printed instead of printing the entire quilt. Shown here are the different areas that can be used to change the print area.



When you change the printable area the page numbers will change accordingly.

Print Options



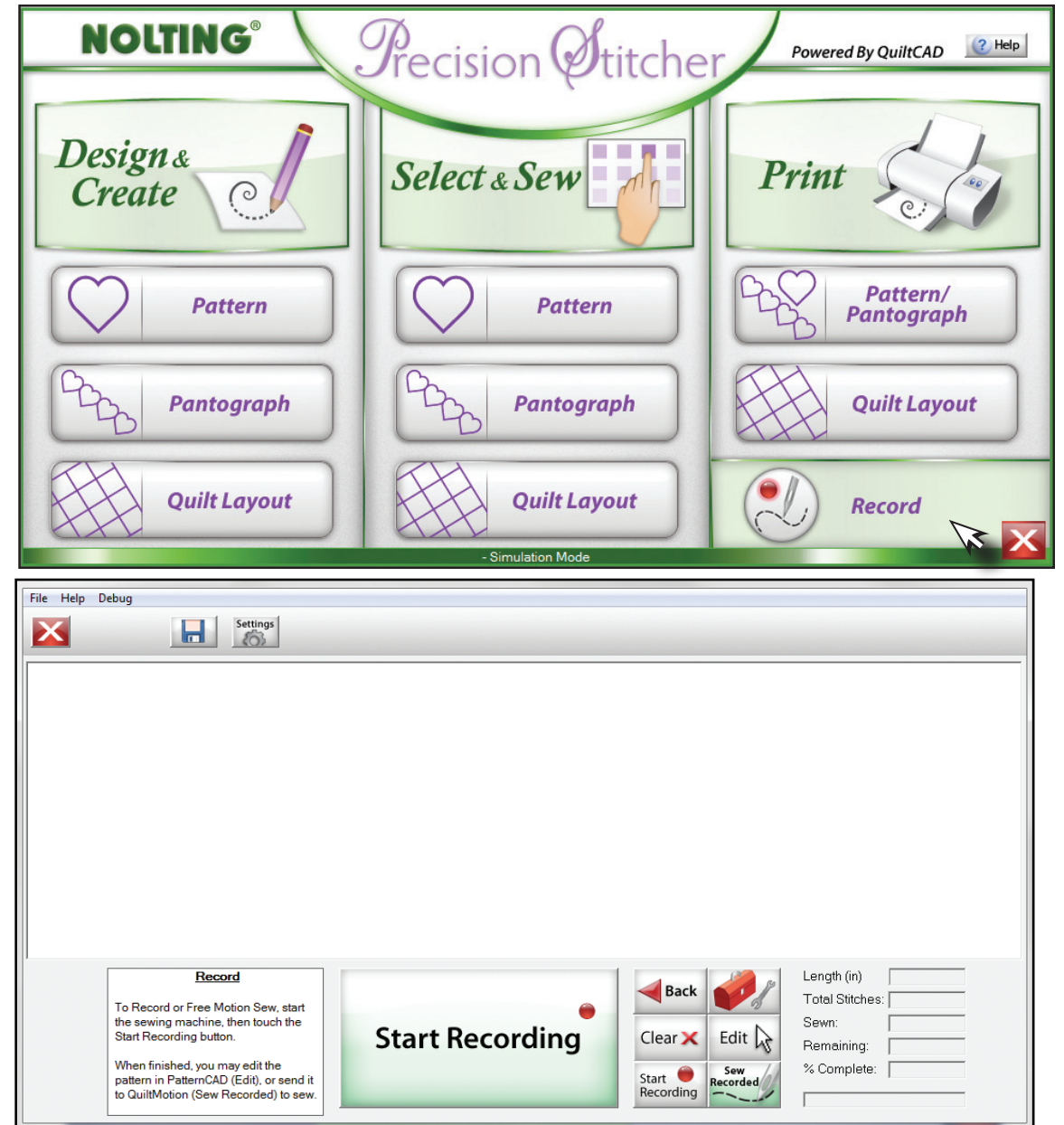
Across the bottom of the screen there are options on how the quilt will be displayed.

- 1. Show Stitching** — When this option is turned on, the stitches will appear on the screen and when the quilt is printed. If this option is not selected, a solid line will be displayed and printed.
- 2. Block Border** — This option shows or hides the block borders of the quilt.
- 3. Show Page** — Here you can choose to have page numbers displayed, or they can be hidden.
- 4. Stitches Per Inch** — With this setting you can adjust the SPI using the + or -, and it will be displayed when you print the pattern or quilt.
- 5. Sheet Caption** — Allows you add a special note to the print pages.
- 6. Print Setup** — Allows you to select a printer to print to.
- 7. Print Pattern** — Prints all pages from the preview window, unless specified by the “Print Pages” option.
- 8. Print Map** — This will print a map of how the printed pages would be placed together.
- 9. Print Pages** — You can specify if you want a range of pages to be printed from the preview screen, or individual pages to be printed.

Record / Free Motion

The Record feature lets you record movement from freehand quilting, or from a pattern you are tracing. You can then choose to sew what you have traced, or save it for later to place onto a quilt.

When you first tap the Record button you may have to set your safety area. Once that has been set you will see the Record screen.



Record Options

- 1. Start/Stop** — Starts and stops the recording process.
- 2. Back** — Back to main menu.
- 3. Tools** — Opens the Tools menu; Reset Safety area, unlock carriage.
- 4. Clear** — Clears all pattern data on the record screen.
- 5. Edit** — Takes the pattern it recorded and opens it in PatternCAD.
- 6. Start Recording** — Starts recording pattern.
- 7. Sew Recorded** — Sews the recorded pattern.

After you select Start Recording and begin to move the carriage, you will see a line being drawn as you go. When you are content with your creation, select Stop. If there is something that is needing to be added, you can continue to record by clicking the Start Recording button again.

Or you can save the design that is currently being displayed.

Lastly, you can click the button to Sew Recorded, this will take you to the placement screen so you can sew your new pattern!

